

Device mount - Satin-finish diffuser with inner longitudinal prism system - direct/indirect narrow/wide distribution - visually continuous

Device mount made of a galvanised, profiled steel sheet; surface coated with polyester resin. Tool-free attachment with integrated side lever catches for rapid fitting in the mounting rail. LED unit in housing length for an optically seamless light run. Housing colour black RAL 9005; Direct/indirect wide/narrow beam light distribution, the lightly satin-finished diffuser made of PMMA plastic with inner longitudinal prisms produces a uniform, homogeneous appearance with ceiling brightening. Continuous light run design. Electrical connection by means of a fixed, 3-pin, quick-fit plug connector and a free choice of phases. Integrated guide for fast contacting. They are exchangeable, permit modernisation and reliably prolong the service life of the overall system.

CHARACTERISTICS

| | |
|-------------------------------|--|
| Order number | 19150004014 |
| EAN number | 4020863413768 |
| Commodity code | 94051190 |
| Certification mark | IP 20, Protection class I, ENEC10 VDE, F, HACCP DIN10500/Food/IFS-application-related suitability/BRC, Indoor, CE |
| Impact resistance (IK rating) | IK03 (10°C bis 40°C) |
| Ambient temperatur | ta 10°C to 40°C |
| Warranty period | 5 years |
| State funding programs | BEG - Federal funding for efficient buildings (valid only for Germany) |

ELECTRICAL ENGINEERING

| | |
|--------------------------------------|--|
| Controller | Electronic driver (1 pcs.) |
| System output | 27W |
| Mains voltage | 230V/50Hz |
| Circuit breakers (inrush current) | 15 pieces/B10, 25 pieces/B16, 24 pieces/C10, 38 pieces/C16 |
| Energy efficiency class/light source | B |

LIGHTING TECHNOLOGY

| | |
|------------------------------------|--|
| Placement | LED, Colour rendering/Light colour CRI ≥ 80 / 4000K |
| Colour tolerance (MacAdam) | 3SDCM |
| Photobiological safety (Luminaire) | RG1 |
| Nominal luminous flux | 5204lm |
| LED service life | 50000h L80/B10 (Tq 40°C) |
| Luminaire luminous efficiency | 191lm/W |
| Beam angle | 45° (C0) / 100° (C90) |
| UGR lat./long. | 22.5 / 22.5 |

MECHANICS

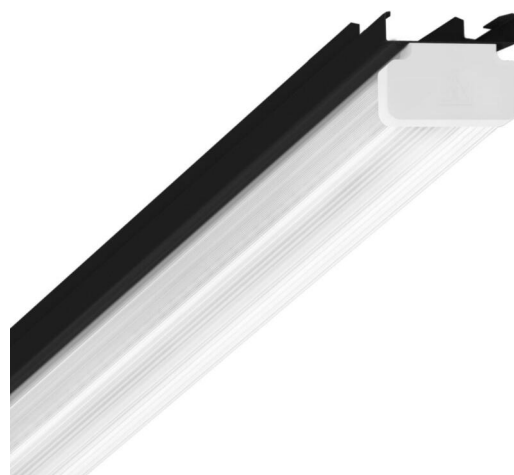
| | |
|----------------------|--|
| Housing colour | black RAL 9005 |
| Dimensions (LxWxDxH) | 1531mm x 63mm x 54mm |
| Weight (net) | 2kg |
| Type of installation | Mounting rail system installation, Light structure |

Dimensions

| | | |
|---|---------|--------|
| L | 1531 mm | Length |
| B | 63 mm | Width |
| H | 54 mm | Height |

DEEP-LINK

<https://www.regiolux.de/en/article/19150004014>



| | |
|----------------|----------------|
| Reference | LED 5000lm 840 |
| ηLB | 100 % |
| Φ ↓/↑ | 90 % / 10 % |
| UGR lat./long. | 22.5 / 22.5 |

